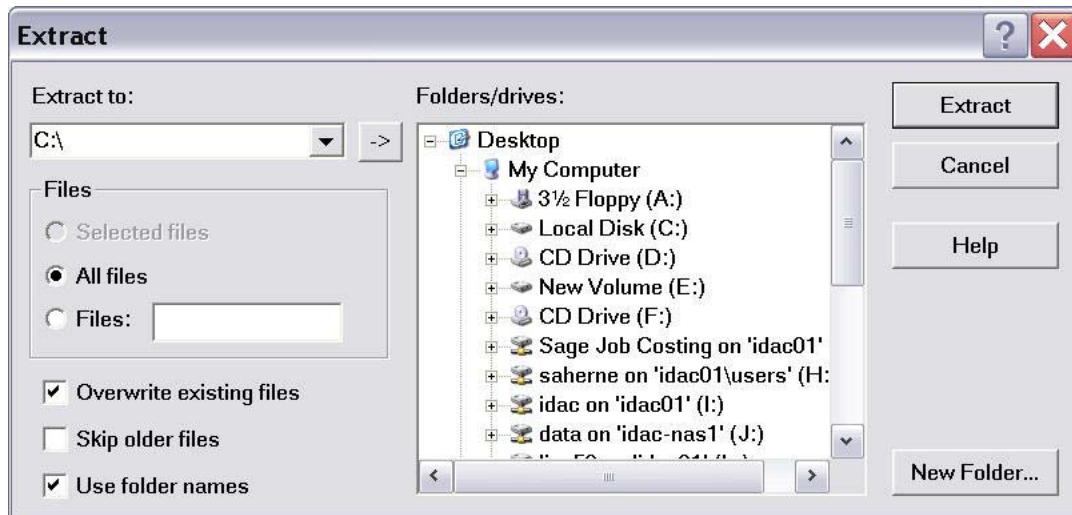
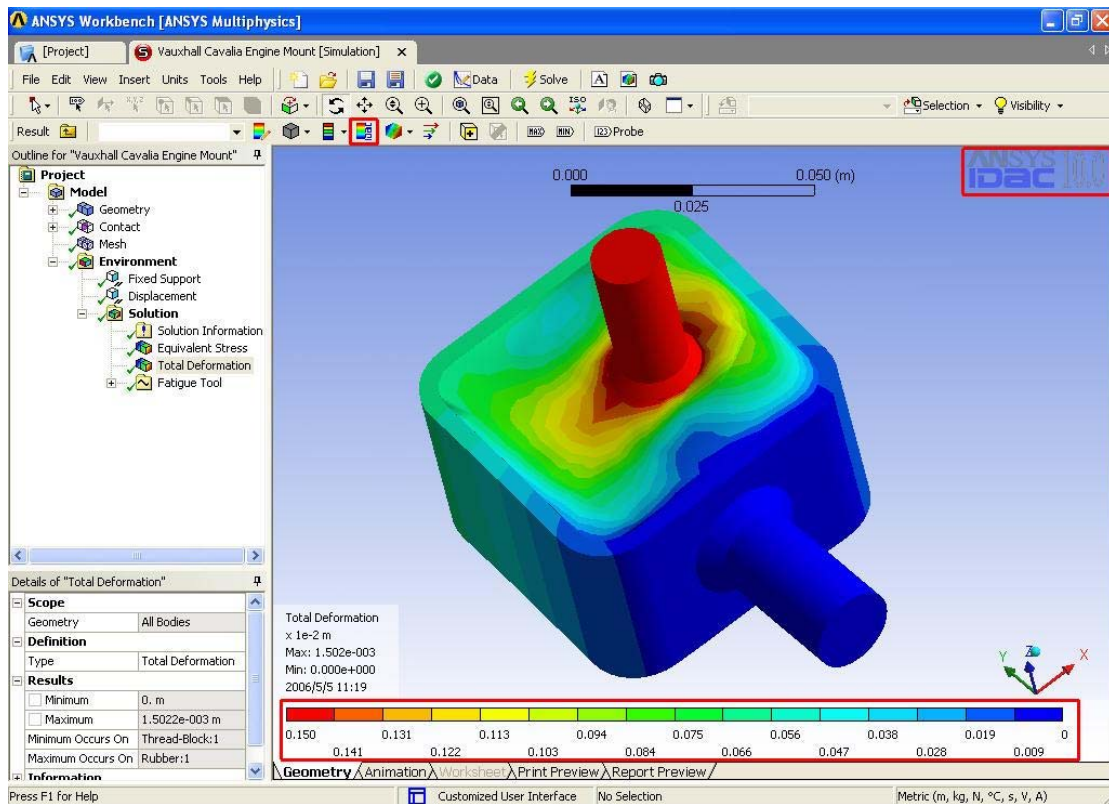


To apply custom settings, simply download the zip file and using winzip (or equivalent unzipping software) and extract all files to the drive in which ANSYS Workbench is installed (default is c:\). Please make sure that the 2 check boxes shown below are ticked to 'Overwrite Existing Files', and 'Use Folder Names'.



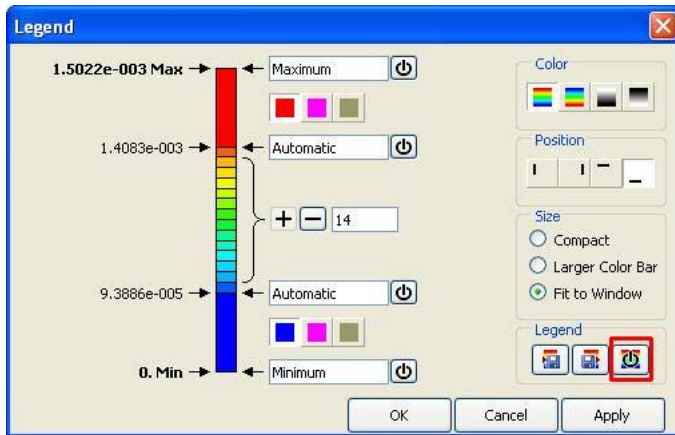
The next time you load up Workbench your screen should look like this:



To reset the Legend back to 9 contour colours, click on the Legend button highlighted below.



You will then see the following screen where you will now need to click the 'reset' button as shown.



Your legend will now have reverted back to the default 9 contour colours.

