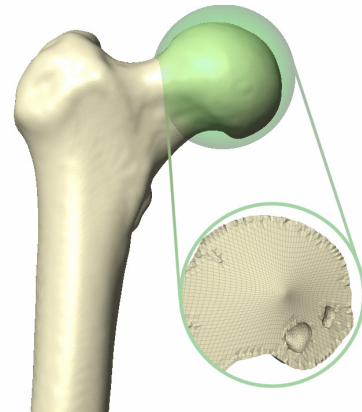
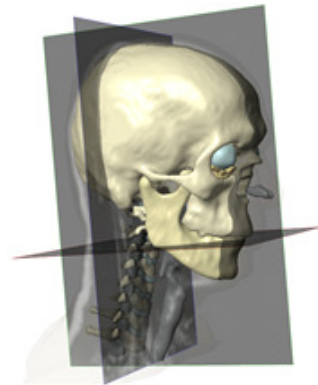


Simpleware Releases Version 3.1 of its World Class Image-Based Mesh Generation Software

Simpleware Ltd., a world leader in image-based mesh generation technology, announces the release of Version 3.1 of ScanIP and ⁺ScanFE, its advanced image processing and mesh generation software package.

ScanIP offers an extensive selection of image processing tools for visualising, segmenting and manipulating scan data such as obtained from CT, MRI, MicroCT, etc. Segmented images can be exported to CAD systems, RP manufacturing or, with the ⁺ScanFE module, directly into leading commercial FE and CFD packages. ⁺ScanFE generates high quality computational models including volume and/or surface meshes, contact surfaces and material properties.

The new release offers many new and improved capabilities in image processing and mesh generation. Sophisticated new tools help ScanIP and ⁺ScanFE users to accelerate the process of segmenting and meshing 3D data. With this new software release, Simpleware extends its leadership in providing a complete solution from 3D scan data to CAD and CAE software tools.



New features of ScanIP and ⁺ScanFE Version 3.1 include:

Algorithms and Export Options

- User defined mesh refinement providing better control over total number of elements and leading into efficient use of computing resources.
- Possibility to register (rotate and align) images
- Accurate estimator of total number of surface and volume elements
- Export of surface meshes in a new set of formats including: IGES, SAT, ANSYS, ABAQUS and PointsCloud
- Direct export of solid models from ⁺ScanFE to COMSOL

User Interface & Usability

- Improved visual feedback between the 2D slice position and the 3D view as well as the option to crop datasets interactively.
- Support of segmenting/meshing up to 250 different masks/sub-domains
- Export images of the 3D view in various format (e.g. png, eps, etc...) for good quality print and presentations
- New fast preview option for quick rendering and visualization of 3D models
- Mask size estimator in ScanIP (e.g. number of voxels)
- Providing user control over the undo/redo option

“ScanIP and +ScanFE Version 3.1 offers many new and exciting features that will significantly help our customers achieve faster image segmentation and obtain more accurate models,” says Dr Philippe Young, Managing Director. “With Simpleware’s range of software products, researchers and engineers have a powerful and robust image processing platform that enables them to generate high-fidelity analysis results faster and more cost effectively.”